



Uli Hauschild, CDT

Dental Design
San Remo, Italy
info@dentaldesign.biz

Antoine Diss, MS, DDS, PhD

Generation Implant
Nice, France

The patient was referred to the clinic with a lateral incisor tooth 12 in need of extraction.

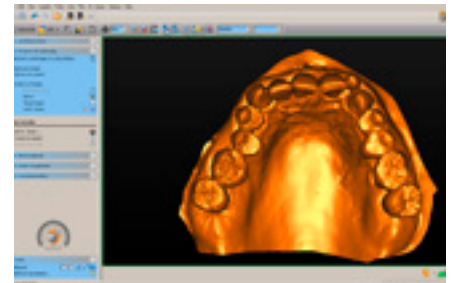
The patient opted for immediate function and esthetics. An Astra Tech Osseospeed TX implant in combination with a Simplant SAFE Guide and patient-specific Atlantis Abutment were used for achieving individualized esthetics and healthy soft tissue.



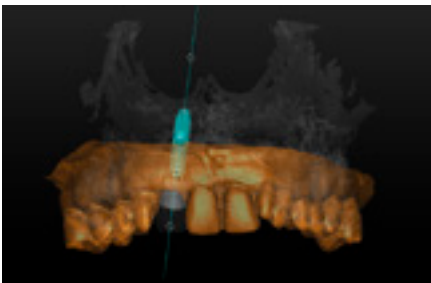
1. Tooth nr 12 will be extracted during implant surgery and this is simulated on the lab model, to indicate the desired soft tissue contours.



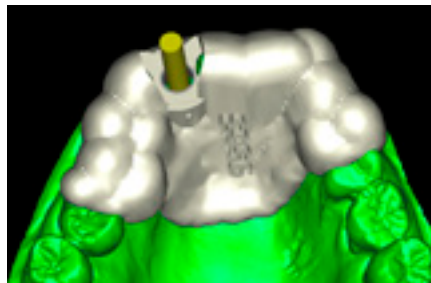
2. A tooth wax-up representing the desired crown is created on the lab model.



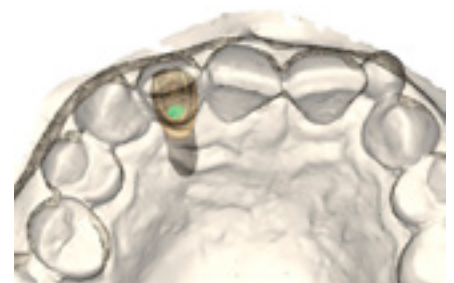
3. Utilizing the open interfaces in Simplant, the scanned lab models are added to the CT data to enable prosthetically-driven treatment planning and a faster digital workflow.



4. In Simplant, the treatment plan is created, followed by the online order request for a Simplant Guide and an Atlantis Abutment.



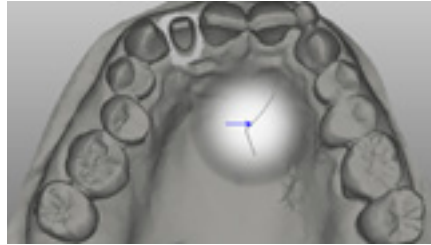
5. The order with all digital data is sent to the design and production units. Then both clinician and laboratory get the opportunity to review and approve the designs before production starts.



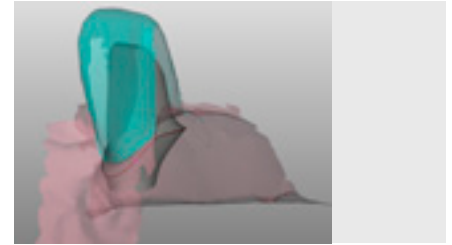
6. The Atlantis Abutment design is shown both in Atlantis WebOrder and in Simplant, for review and approval.



7. No models need to be shipped to the Atlantis production unit, since the lab based scans are available with the Siplant digital data.



8. Upon design approval, the Atlantis Abutment Core File is provided allowing to start CAD design of the provisional crown.



9. A perfect temporary restoration is designed digitally before receipt of the abutment.



10. CAD/CAM provisional crown and final zirconia frame.



11. Received parts - Atlantis Abutment.



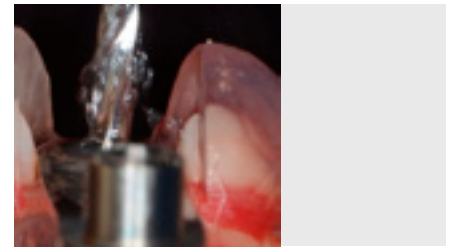
12. After final check, perfectly fitting Atlantis Abutment, CAD/CAM provisional crown and final zirconia frame are sent to the clinic.



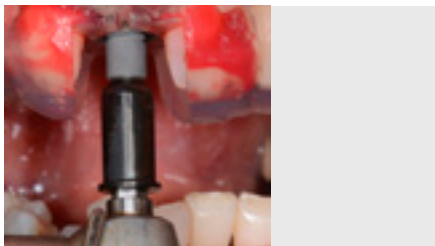
13. Received parts - Siplant SAFE Guide.



14. In one surgical session, the lateral incisor is carefully extracted...



15. Followed by precise surgery with the Siplant SAFE Guide and the guided surgery kit for Astra Tech Implant System.



16. Guided implant placement.



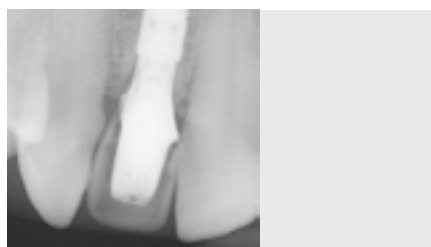
17. Rotational alignment of the implant by means of the index on the Siplant Guide.



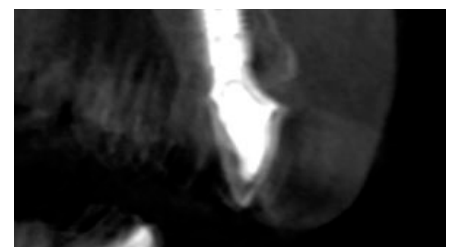
18. The shape and strength of the Atlantis Abutment are used to provide perfect conditions for individualized esthetics.



19. Immediately after guided surgery and abutment installation, the CAD/CAM temporary crown is placed and cemented on the Atlantis Abutment.



20. X-ray control.



21. CT scan control.

This case report is published as an inspiration for you as a clinician and not necessarily as a recommendation from Dentsply Sirona.